

# ST. BRIDGET DAY - MAY 28

Come and Join Us

## ANNUAL MEETING AGENDA

Announcing! The 2000 Annual Meeting of the St. Bridget Historical Society will be held on Sunday, May 28, 2000 at 1:30 p.m. at St. Bridget Church. The proposed agenda for the meeting is as follows:

- ◆ Opening Prayer
- ◆ Minutes of 1999 Meeting
- ◆ Treasurer's Report
- ◆ Old Business:
- ◆ New Business: Workday 2000
- ◆ Other Business:
- ◆ Election of Secretary-Treasurer
- ◆ Closing Prayer

*We reserve the right to make last minute changes to our agenda.*

## IN THIS ISSUE

- ◆ **Meet St. Bridget's Architect: George Stauduhar — on page 3**
- ◆ **Other Articles About the Construction of our Church**
- ◆ **31st Annual St. Bridget Day Celebration**
- ◆ **St. Bridget General Store**

## HERITAGE TRUST FUND SAYS "NO"

On May 6, 2000, the St. Bridget Historical Society was notified by the Heritage Trust Fund, operating through the Kansas State Historical Society, that our request for a grant was not approved. This is the fourth time we were told that there were more requests than funds available.

Even though we did not receive our grant at this time, repairs and normal maintenance and upkeep will need to go on IF we are to keep our church.

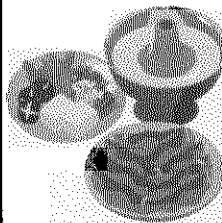
Through the generosity of a former parish family, the St. Bridget Cemetery Perpetual Care Fund is now endowed well enough for us to make improvements and provide needed maintenance and upkeep. But the provisions of the will explicitly state that the money **MUST BE USED AT THE CEMETERY**. Therefore, anyone thinking of donating to help St. Bridget might want to direct their support to the church upkeep and maintenance, instead of the cemetery.

**Will you help us?** A commitment card is enclosed with this mailing. And we thank you in advance for any help you can give us to keep our church building sturdy and safe.

## THANK YOU

We wish to thank Chari Johnson-Reynolds, our original grant-writer, and Kathy Johnson who collaborated to submit a new request for a Heritage Trust Grant. Unfortunately, as the above article indicates, we were turned down a fourth time in three years. But we thank them for their hard work preparing the grant application

## 31st Annual St. Bridget Day Schedule



The 31st Annual St. Bridget Day will be held on **May 28**. The Business Meeting will start at **1:30 p.m.** with **Sunday Mass at 3:00 p.m.** Father Tom Dolezal will be the celebrant.

Following the Mass will be our traditional potluck dinner in the church basement. **Drinks and table service will be provided by the St. Bridget Historical Society.** Families are asked to bring **one meat dish** and **one other dish** for the potluck.

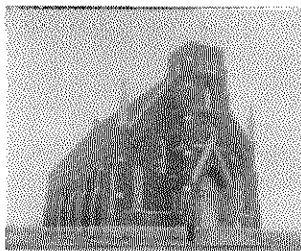
As in past years, the **Mass will be offered for deceased members of both the St. Bridget Historical Society and old St. Bridget parish.**

# St. Bridget News

Rural Axtell, Kansas

SPRING 2000 NEWSLETTER

# Lucky Day at St. Bridget



It was definitely a lucky day in November for the St. Bridget Historical Society when Chris Adams, a journalist from Topeka, Kansas, came to visit our church six miles north of Axtell. As it turned out, she

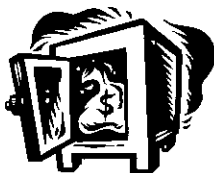
was researching the architect, George P. Stauduhar, who designed St. Bridget Church in the early 1900's. She has furnished us with a biographical sketch of Mr. Stauduhar's life and the information on where to find the original blueprints. At Mrs. Adams' suggestion, we wrote to the University of Illinois at Urbana and contacted the archive department. For a modest photocopying fee, they sent us a number of architectural designs for our church — a treasure of a find. The plans even have a completed bell-tower that would have reached 150 feet from the front steps of the church. St. Bridget would have been seen for many a mile if that tower had been completed. We thank Mrs. Adams for sharing her research with us and you will find her story on the next page. It is interesting to finally know who designed our beautiful church.

## Kansas Preservation Alliance Inc.

St. Bridget Church is to be considered one of **Kansas' Most Endangered Historic Properties**, through the efforts of Chari Johnson-Reynolds. This program, administered by the Kansas Preservation Alliance, Inc. (KPA), is intended to focus public attention on endangered historic resources across the State of Kansas and Cheri nominated our beautiful church to be placed on their list of endangered structures. We will find out soon if her nomination is accepted. When bricks are falling off the bell-tower, because tuck pointing is needed, we would say it is endangered. Last year, we had to spend approximately \$14,000 to pay for necessary tuck pointing to the top of the bell tower. This was monies set aside to meet our responsibilities for the matching Heritage Trust Grant (that we were never offered).

While there are no specific grants associated with the list, the KPA will assist local groups in working to save these threatened properties by publicizing their plight and providing technical assistance. *(This information was published in a newsletter of the Kansas Preservation, Cultural Resources Division - Kansas State Historical Society, March-April, 2000).*

On April 17, Chari Johnson-Reynolds nominated St. Bridget Church for the Kansas Most Endangered Historic Properties list. The reason she gave for needing assistance was the ongoing deterioration of the mortar between the bricks and the dire need for repointing the brickwork.

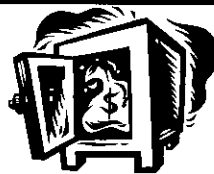


### From the Archives

#### The Laying of the Corner Stone of the new Church at St. Bridget

*From The Axtell Standard*  
June 15, 1905

The corner stone of the new church at St. Bridget will be laid next Tuesday, June 20, a.m. by Rev. Bishop Lillis. A cordial invitation is extended to everybody to be present. Dinner and Supper will be served on the grounds. A concert will be given in the afternoon and a dance at night.



### From the Archives

#### WIND STORM HITS ST. BRIDGET

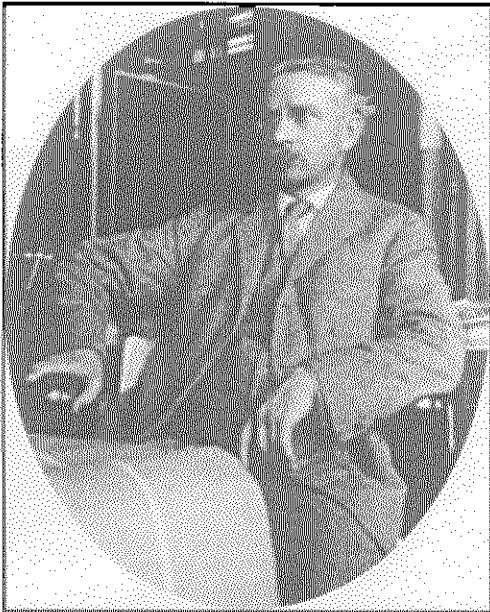
*From The Axtell Standard*  
September 21, 1905

All of the scaffolding was blown down at the St. Bridget Church, in course of construction, the windows and door frames blown out and the walls considerably damaged.

## Your Dues Help Us Keep St. Bridget Going

# Did You Know?

## Who designed St. Bridget Church with its vaulted ceilings?



*Architect: George P. Stauduhar  
(1863-1928)*

**Meet George Stauduhar**, the architect of St. Bridget Church. Through the kindness of Chris Adams, a parishioner of St. Joseph Church in Topeka, we have the following article about our architect. Mr. Stauduhar also designed her church, St. Joseph in Topeka. Chris Adams writes:

A lovely structure such as St. Bridget's Church must first begin on the drawing board, but with a nearly century old building often records of the designer are lost or forgotten. Recently though, the architect of this magnificent edifice, a man by the name of George P. Stauduhar, was brought to light.

In 1890, Mr. Stauduhar had established an architectural practice in Rock Island, Illinois that continued until his death on September 23, 1928. He had shown an early aptitude for architectural design that was furthered by his studies at the University of Illinois. He was married and had eight children. The architectural practice eventually involved the entire Stauduhar family.

The sons assisted in business arrangements and supervised on-site construction of work, while the daughters maintained financial records and inventories. The oldest son, Charles operated his own construction company and was George Stauduhar's principle business partner.

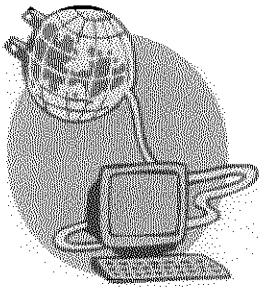
Along with designing St. Bridget's Church, Mr. Stauduhar built in Illinois, Indiana, Iowa, Minnesota, Nebraska, North Dakota, Ohio, Pennsylvania and Wisconsin. The churches of Kansas include St. Columbkille at Blaine, St. Patrick's at Kingman, St. Joseph's at Flush, St. Mary's at Pittsburg, Corpus Christi (church and rectory) at Mooney Creek and St. Joseph's at Topeka. Mr. Stauduhar designed a church for St. Michael's in Axtell, but it was deemed too expensive for the small parish and another design by another architect was eventually chosen. (This information was gleaned from the archives at the University of Illinois that houses architectural and personal papers of Mr. Stauduhar donated by his grandchildren.) Being resourceful, Mr. Stauduhar employed sub-contractors from an area and used available materials native to a region. But the bulk of the work was donated by parishioners, who by the sweat of their brow and strength of their backs labored in love to produce the huge impressive vaulted ceilings and arches of these beautifully constructed imposing structures.

Stauduhar, with attention to detail, designed over 200 churches along with residences, commercial buildings and even steamboat interiors. Structures ranged in size from large hospitals to small country chapels. Roman Catholic churches in the "Neo-Gothic Revival" style were his specialty. He combined classic European Romanesque and Gothic tradition with American architectural styles popular in the Midwest at the turn of the century. In his residential work, he incorporated his love of the romantic. These homes are known for their mixture of textures and architectural details; including intricate columns, ornate windows, stained and leaded glass, with decorative twisted iron downspouts. Many of these fabulous creations, including St. Bridget's Church, are currently listed on historic registers.

**For more information contact:**

*Chris at (785) 266-2778  
Or Teresa at (785)-286-1247*

**Now you know!**



# Visit Our Web Site

<http://www.marshallco.net/axtell/stbridget/>

### You'll Find

- ◆ History of the parish
- ◆ Old and new pictures of the church
- ◆ Officers of Historical Society
- ◆ and much more.

# St. Bridget General Store

Open to Serve You

Commemorative Plates — \$15

History Books — \$17.50

1927 Replica of a St. Bridget  
Cookbook — \$10.00

St. Bridget Cross — \$9.00

Genealogy: Reprints of  
Baptismal Records — \$15.00

Marriage — \$10.00

Funeral — \$10.00

Send to:

*Leo Glynn, Treasurer  
St. Bridget Historical Society  
Rt. 1 - Box 56  
Summerfield, KS 66541*

*Please add \$2.00 per item for postage/handling*

# Membership Dues For 2000 now Due

Annual Dues For Membership In  
St. Bridget Historical Society is \$5.00 - mail dues to:

*Leo Glynn  
Rt. 1 - Box 56  
Summerfield, KS 66541*

**St. Bridget News**

St. Michael Church  
P.O. Box K  
Axtell, KS 66403

Non-Profit Organization  
U.S. Postage  
**PAID**  
Axtell, KS 66403  
Permit No. 3